



Nestlé. Good food, Good life

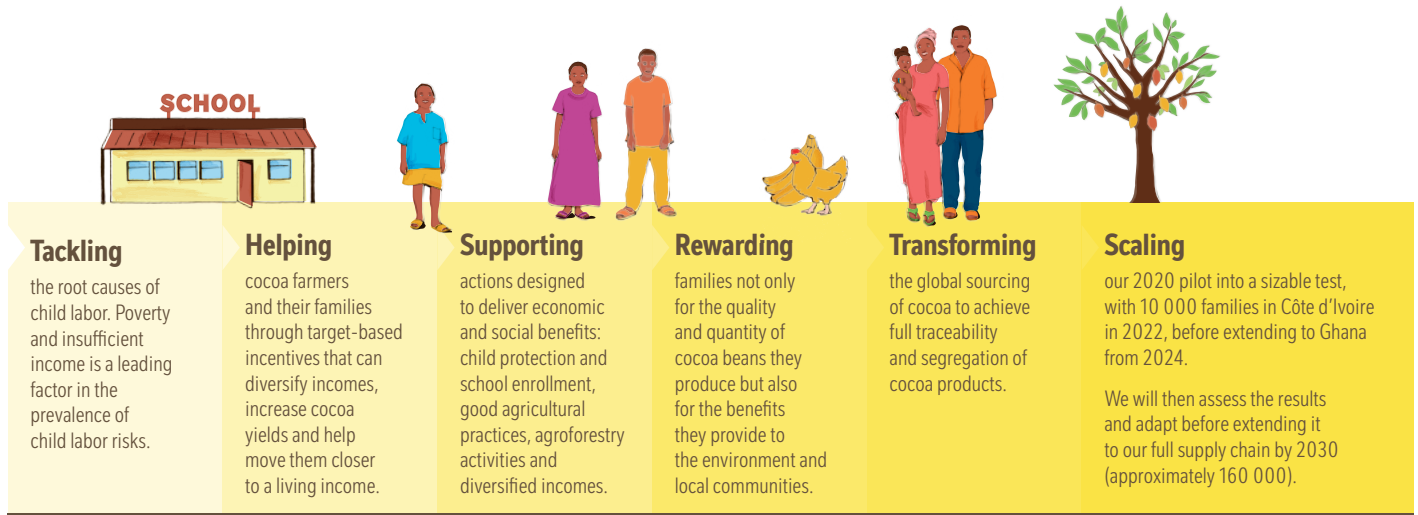
THE INCOME ACCELERATOR PROGRAM

How it works

JANUARY 2022



Nestlé is building on its longstanding efforts to tackle child labor risks in cocoa production. Our innovative income accelerator program aims to improve the livelihoods of cocoa-farming families, while advancing regenerative agriculture practices. This ambition also includes transforming the global sourcing of cocoa to achieve full traceability and segregation of its cocoa products, helping to build consumer trust.

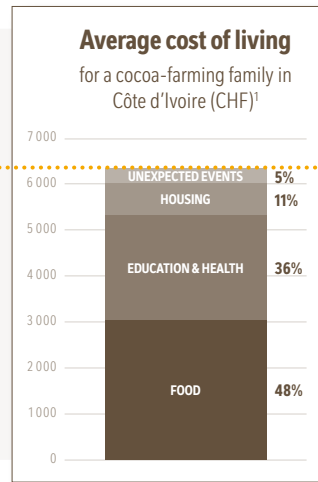


For more details on the program, visit www.nestle.com/living-income-cocoa

WHAT IS LIVING INCOME?

CHF **6 365** per year¹

A living income is the net annual income required for a household in a particular place to afford a decent standard of living for all members of that household.



Living Income Benchmark

Living income benchmark, adjusted by KIT using OECD factor for household size of 3.82 adults and 2.96 children.²

How is the program built?

The income accelerator program offers a novel approach to help farmers and their families steadily and sustainably build economic stability. The program enables, incentivizes and ultimately rewards practices that increase crop productivity and help secure additional sources of income, which aim to close the gap to living income and help protect children.



HOW DOES THE INCENTIVE WORK?

Incentives are put in place to accelerate the adoption of practices across four key areas. These incentives will stabilize over time as income from increased yields and diversified sources grows. **They will allow families to earn up to CHF 500 annually for the first two years* of the program and CHF 250 per year thereafter.**

Families receive the full amount of the incentive by achieving targets in all four key areas, which are verified by our partners, Rainforest Alliance, the International Cocoa Initiative and suppliers.

	SCHOOL ENROLLMENT	GOOD AGRICULTURAL PRACTICES	AGROFORESTRY ACTIVITIES	DIVERSIFIED INCOMES	BONUS INCENTIVE
KEY AREAS	Reducing child labor risks through school attendance and monitoring	Helping farmers improve cocoa production by training and subsidizing pruning groups	Improving farm resilience by providing forest and fruit trees	Becoming less dependent on cocoa by helping families to grow other crops or raise livestock	CHF 100 when each target is achieved, and a CHF 100 bonus for reaching all four targets
INCENTIVE	CHF 100*	CHF 100*	CHF 100*	CHF 100*	CHF 100*
TARGET	Children 6-16 enrolled and attending school	Improved pruning	Number of shade trees planted	Enrolled in alternative incomes program	Targets achieved in all 4 areas
PAID TO	Spouse/Partner	Farmer	Farmer	Spouse/Partner	Spouse/Partner and Farmer

Mobile payments

Payments will be delivered via a secure mobile service transfer that will ensure traceability directly from Nestlé suppliers to the intended recipient.

Payment calendar

Managing cash flow throughout the year is often a challenge. Incentives will be distributed when they are needed most.

Empowering women

Incentive payments are divided evenly between the heads of household.



Leaving no farm behind

The fixed incentive amount is a key feature of the program. It is not paid on the volume of cocoa sold in order to provide smaller farmers meaningful support, leaving no one behind.

AIMING TO REACH A LIVING INCOME

Phase 1: Baseline

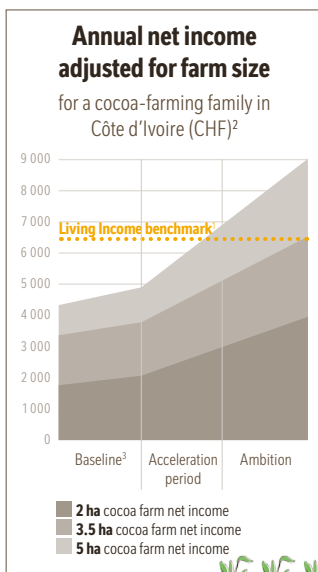
Our model assumes a baseline of CHF 2 973, informed by the average productivity and revenue of Nestlé Cocoa Plan farmers.³

Phase 2: Acceleration period

As families adopt the new practices and benefit from the program's training and services, as well as the impact of the cash incentives, we anticipate an acceleration in income growth.

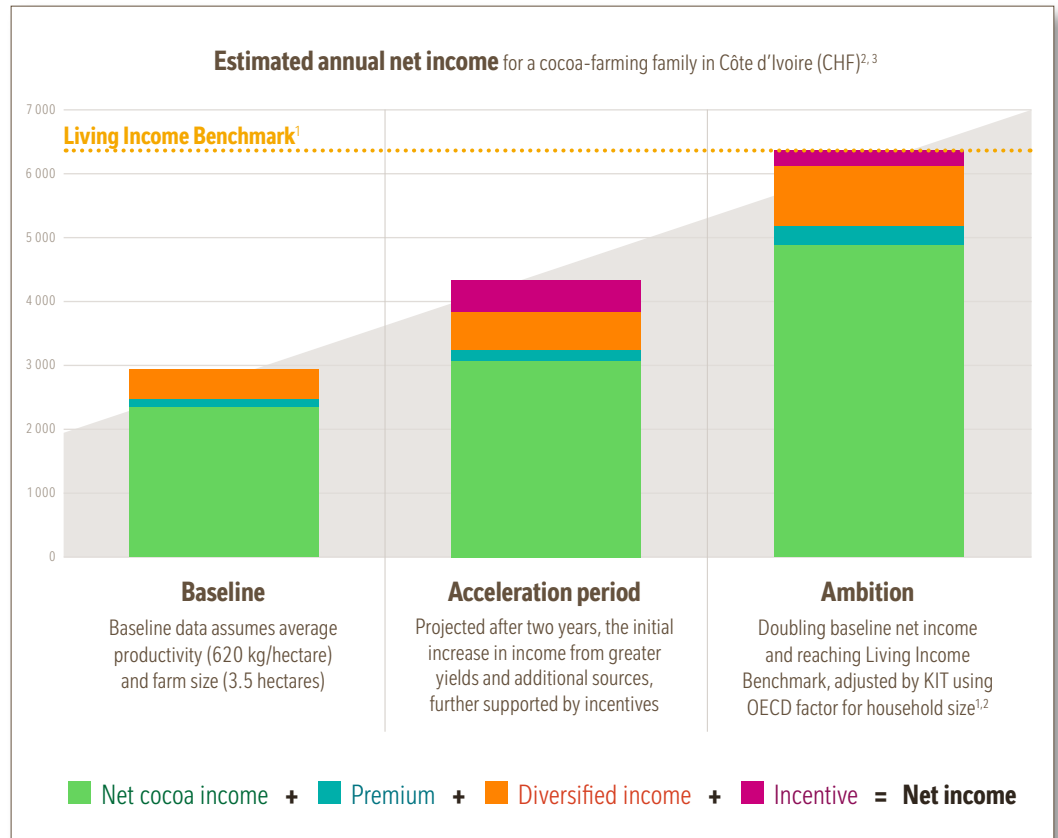
Phase 3: Ambition

The program is projected to double farmers' baseline income, achieving a living income for families who participate in the Nestlé Cocoa Plan.^{1,2}



Pruning Proof

We set up demonstration plots as part of the pilot program to show the benefits of pruning and application of good agricultural practices. These were on normal farmers' fields with existing trees. Yields on these plots have reached on average more than 1 500 kg per hectare (in approximately 3 years).



CONTROLLING FOR VARIABLES

Our model was developed building on static data (cocoa price and exchange rates) combined with data from KIT Royal Tropical Institute and Rainforest Alliance. The model will be updated as the program progresses and we gather additional data.

Cocoa price	CHF 1306 per 1 000 kg (CFA 825 per kg) ⁴		
Farm size	3.5 hectares ²		
Family size	3.82 adults 2.96 children ²		
Productivity	620 kg/ha ³ Baseline	800 kg/ha Acceleration period	1200 kg/ha Ambition
Exchange rate	CHF 1 = USD 1.0989 ¹		

MONITORING OUR PROGRESS

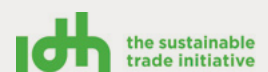
The success of the program will be monitored with the help of KIT Royal Tropical Institute and the continuation of our Child Labor Monitoring and Remediation System (CLMRS), in collaboration with the International Cocoa Initiative. Find out more about the CLMRS in our [Tackling Child Labor report](#).

OUR PARTNERS

The rollout of the program would not be possible without the assistance and collaboration of our partners: KIT Royal Tropical Institute, International Cocoa Initiative, IDH, The Sustainable Trade Initiative, Rainforest Alliance, local cooperatives and cocoa farmers, including the Governments of Côte d'Ivoire and Ghana.



KIT Royal Tropical Institute



¹ Cost of living & living income benchmark: Ivorian Center for Socio Economic Research (CIRES) (2018). *The Living Income Report, Rural Côte d'Ivoire, Cocoa growing areas*. adjusted for household size based on Byrnolt, R., Laven, A., & Tyszler, M. (2018). *Demystifying the Cocoa Sector in Ghana and Côte d'Ivoire*. The Royal Tropical Institute (KIT) updated for inflation in August 2020 and exchange rate on 13th January 2022.

² Average family size: 3.82 adults and 2.96 children; Average farm size: 3.5 hectares; sourced from Byrnolt, R., Laven, A., & Tyszler, M. (2018). *Demystifying the Cocoa Sector in Ghana and*

Côte d'Ivoire. The Royal Tropical Institute (KIT). Available at: <https://www.kit.nl/wp-content/uploads/2020/05/Demystifying-complete-file.pdf>

³ Based on average income measured from a random sample of 1 269 farmers from 34 coops; sourced from Nestlé Cocoa Plan M&E Survey & Analysis of productivity indicators 2020 Results. The Rainforest Alliance (February 2021)

⁴ Model is based on the cocoa 2021/2022 season price